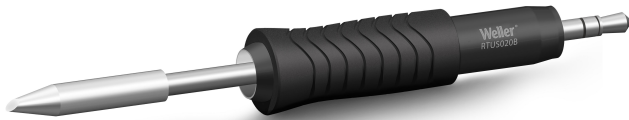


RTUS 020 B MS

Item No: T0050112799

RTUS Ultra Soldering tip, bevel cut,
2.0 mm, MIL-SPEC



KEY FEATURES

- + For all heavy duty application with larger component sizes:
Smart high performance active tips for heavy duty and largest components: from 1612 (Component Size XL to XXL)
- + Extremely Fast 7-Second Heat-Up Time for Heavy-Duty Applications
- + Thermal Core Technology Provides High Power at the Tip Point
- + Maximum Precision:
Short tip-to-grip distance and optimized shape provides maximum precision during the soldering process.
- + Clear Identification Smart Tips
- + Full Process Control with Tip Lock Function
- + Full Traceability with Tip ID Number and Integrated Data Storage
- + Accurate Data Results with Tip-Offset Function
- + Fast, Safe and Easy Tip Exchange
- + Maximum Protection:
(IPC industry standards - TM-650 2.5.33)

TECHNICAL DATA

Length	29mm
Diameter	2.0 mm
Mil-Spec	Yes
Tip Range	Smart RT Ultra
Tip Shape	Bevel Cut
Tip Type	MS
UPC	037103369680
Works With	WXUPS MS
Product Family	SMART RT Ultra Active Tips